

LYNN TOWNSHIP

Each township has six files containing six sections in each, and one file containing all 36 sections.

Lynn01to06.pdf
Lynn07to12.pdf
Lynn13to18.pdf
Lynn19to24.pdf
Lynn25to30.pdf
Lynn31to36.pdf
LynnAll36.pdf

The points are listed starting with the point above the SE corner and continuing in a counter-clockwise rotation around the section. This normally begins with the East point, Northeast, then North, but may also include Witness Corners, and/or Meander Corners.

Definitions

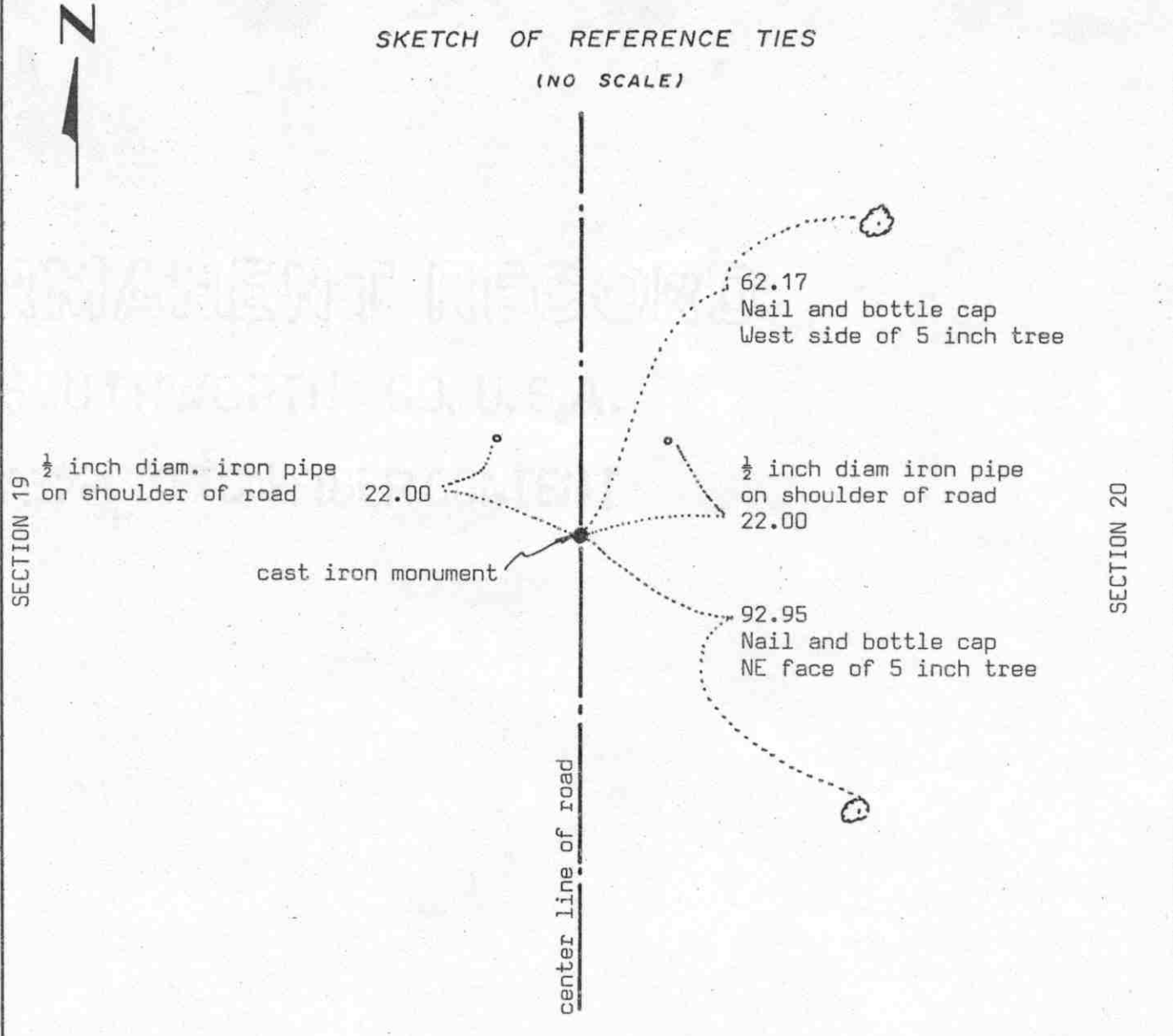
Witness Corner: A witness corner “stands in” when the true corner cannot be monumented or occupied because of difficult terrain or obstruction of the corner sight. The witness corner must be on the section line and is usually 5 or 10 chains away from the true corner.

Meander Corner: The intersection of a township, range, or section line and the banks of a navigable stream or meandering body of water.

Certificate of Location of Government Corner

SKETCH OF REFERENCE TIES

(NO SCALE)



Statement of evidence relative to this corner location on sheet 2

I hereby certify that this document was prepared by me or under my direct supervision.

Willard Pellinen
Willard Pellinen
McLeod County Surveyor
License No. 9626

Date 3/13/90

OFFICE OF THE COUNTY RECORDER
MCLEOD COUNTY, MINNESOTA.

I hereby certify that this document was filed in this office at 4 o'clock P.M. on the 19th day of March, 1990.

Carmen Bellie, County Recorder

By _____, Deputy

Document No. 232389

Certificate of Location of Government Corner

This corner originally was set by the General Land Office in 1855. Thomas Simpson "set quarter section post in mound with trench, pits, charred stake and osage orange seeds northeast and southwest."

August 29, 1979. We dug for corner, John Tupa from Hutchinson with a backhoe. We found a 16 inch by 16 inch by 12 inch stone with a drill hole. This stone was set on top of the old road, down $1\frac{1}{2}$ feet below the present road surface. Below the stone, below the old road surface, we found a wood stake. This stone was within a few feet of being half way between the section corners.

August 30, 1979. We set a McLeod County cast iron monument.

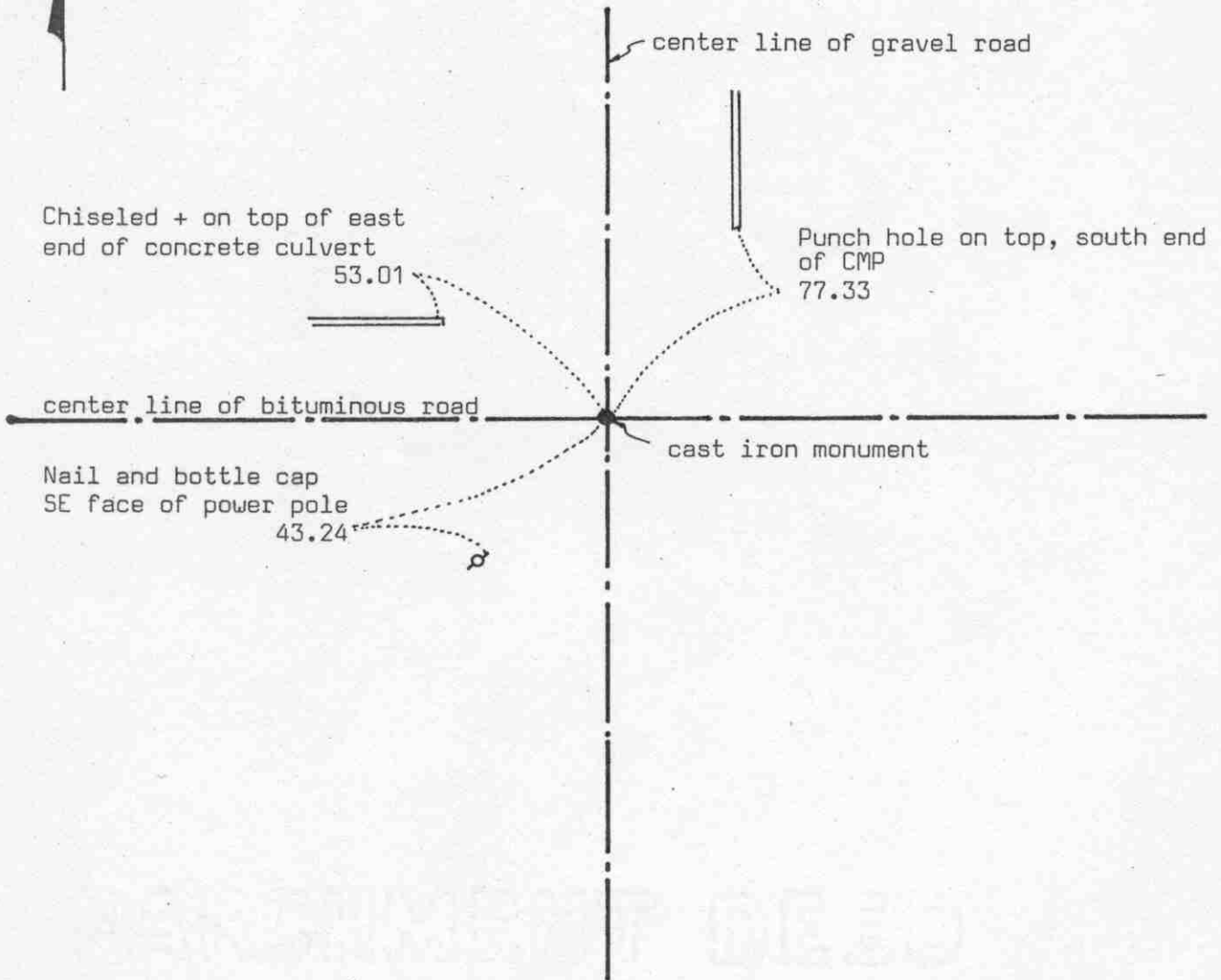
We accept the found stone and the wood stake as having perpetuated the true location of the quarter corner.

Certificate of Location of Government Corner



SKETCH OF REFERENCE TIES

(NO SCALE)



Statement of evidence relative to this corner location on sheet 2

I hereby certify that this document was prepared by me or under my direct supervision.

Willard Pellinen

Willard Pellinen
McLeod County Surveyor
License No. 9626

Date 3/14/90

OFFICE OF THE COUNTY RECORDER
MCLEOD COUNTY, MINNESOTA.

I hereby certify that this document was filed in this office at 4 o'clock P.M. on the 19th day of March, 19 90.

Carmin Ostlie, County Recorder

By _____, Deputy

Document No. 232388

NORTHEAST corner, Section 19, Township 116 North, Range 30 West

Certificate of Location of Government Corner

This corner was originally set by the General Land Office in 1855. Thomas Simpson "set post, corner to sections 17, 18, 19 and 20. Erected mound with trench and pits, charred stake and osage orange seeds at each angle."

1948. County Highway field notes show a pointed stone at the corner.

1972. We found a pointed stone down below the road surface and set a $\frac{1}{2}$ inch diameter iron pipe over it and took reference ties.

June 15, 1979. We replaced the iron pipe with a McLeod County cast iron monument.

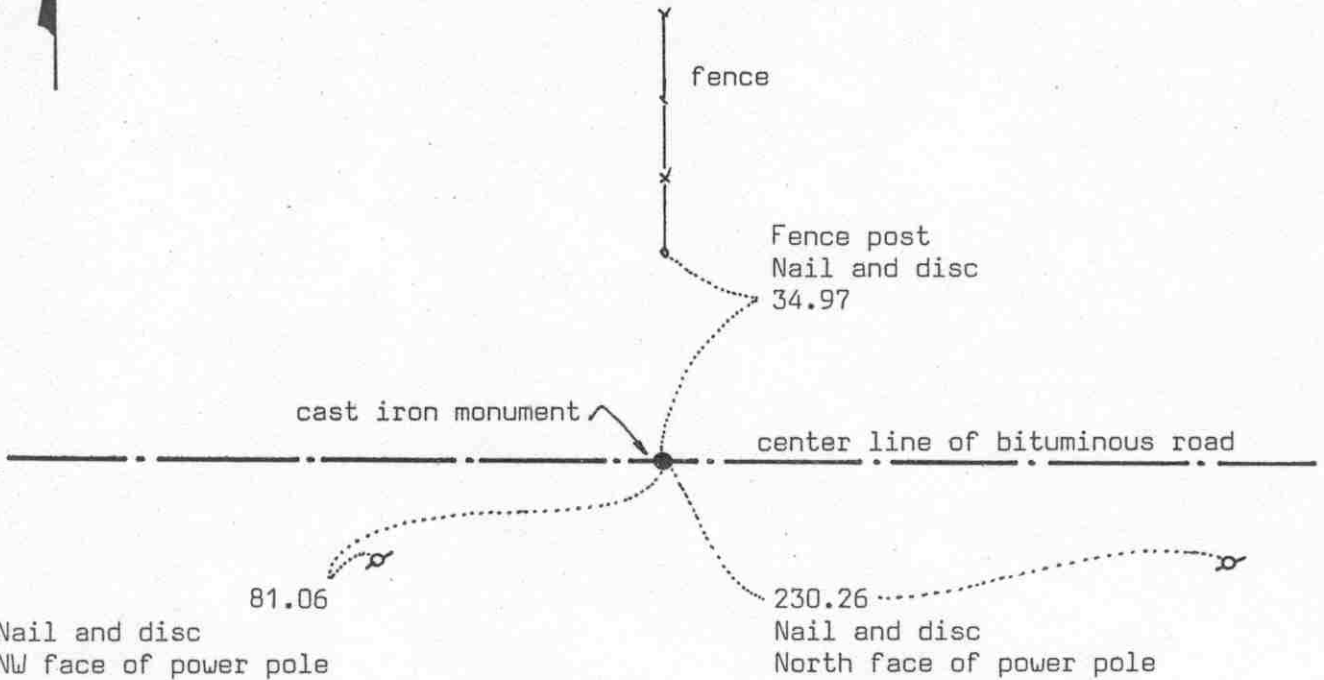
February 28, 1989. We found the monument in good condition and the reference ties good.

We believe the stone we found was the same stone the highway department found in 1948 and that it had perpetuated the correct section corner.

Certificate of Location of Government Corner



SKETCH OF REFERENCE TIES
(NO SCALE)



Statement of evidence relative to this corner location on sheet 2

I hereby certify that this document was prepared by me or under my direct supervision.

Willard Pellinen

Willard Pellinen
McLeod County Surveyor
License No. 9626

Date 3/11/90

OFFICE OF THE COUNTY RECORDER
MCLEOD COUNTY, MINNESOTA.

I hereby certify that this document was filed in this office at 4 o'clock P.M. on the 19th day of March, 1990.

Carmen Ostlie, County Recorder

By _____, Deputy

Document No. 232390

Certificate of Location of Government Corner

This corner was originally set by Thomas Simpson of the General Land office in 1855. He "set quarter section post in mound with trench, pits, charred stake and osage orange seeds northeast and southwest."

April 25, 1933. Survey notes by E.L.Higgins, county surveyor, show a stone in a marsh in line with a fence north at the corner.

January 18, 1979. We measured the north line of Section 19 and set a temporary quarter corner in the center line of the road in line with a fence north.

May, 1979. We found an iron pipe down 1 foot below the road surface with a stone below it. This was within 1 foot of 1932 distances by the Highway Department to the northwest and northeast corners of the section, and within 7 feet of the proration of government distances to the section corners.

June 15, 1979. We set a McLeod County cast iron monument at the corner and took reference ties.

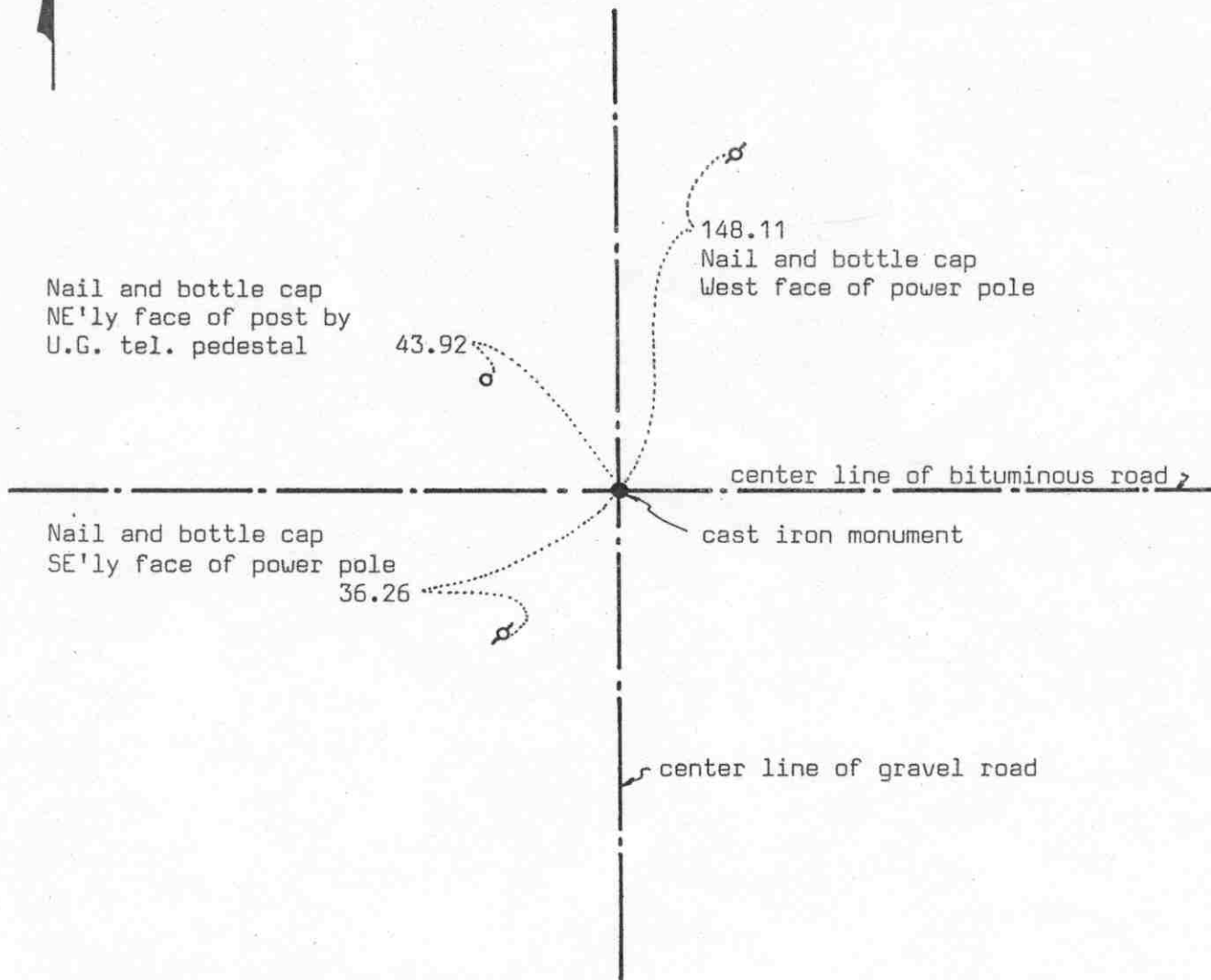
February 28, 1989. We found the monument in good condition and the reference ties good.

We believe the stone we found is the same stone found by Higgins in 1933 and that it had perpetuated the true quarter corner.

Certificate of Location of Government Corner



SKETCH OF REFERENCE TIES
(NO SCALE)



Statement of evidence relative to this corner location on sheet 2

I hereby certify that this document was prepared by me or under my direct supervision.

Willard Pellinen

Willard Pellinen
McLeod County Surveyor
License No. 9626

Date 1/6/90

OFFICE OF THE COUNTY RECORDER
MCLEOD COUNTY, MINNESOTA.

I hereby certify that this document was filed in this office at 2 o'clock P.M. on the 8th day of February, 1990.

Carmen Ostlie, County Recorder

By _____, Deputy

Document No. 231868

Certificate of Location of Government Corner

This corner was originally established in 1855 by John Ryan of the General Land Office. He "set post, corner to Sections 13, 18, 19 and 24, deposited charcoal, dug pits and trench, built mound and planted osage orange seeds at the corners of the mound.

May, 1977. We dug for the corner at the center line intersection of the roads. We found a spike down 3 inches below the bituminous surface and a 2 inch iron pin down $2\frac{1}{2}$ feet below the surface. We took reference ties.

June 15, 1979. We set a McLeod County cast iron monument.

February 28, 1989. We found a spike at the surface which we had set previously over the cast iron monument. Only 1 reference tie remaining. We took additional ties.

We believe the iron pin has perpetuated the correct location of the section corner. We don't know who set the iron pin, but it occupation lines (center line intersection) and the adjoining property owners have accepted the center lines as marking the section lines.

WEST QUARTER corner, Section 19, Township 116 North, Range 30 West

Certificate of Location of Government Corner

SKETCH OF REFERENCE TIES (NO SCALE)

SECTION 24 T. 116 R. 31

SECTION 19 T. 116 R. 30



Nail and bottle cap
East face of power pole
168.51



Re-rod



31.32
Nail and bottle cap
South face of wood fence post

Nail and bottle cap
West face of power pole
158.53

center line of gravel road

Statement of evidence relative to this corner location on sheet 2

I hereby certify that this document was prepared by me or under my direct supervision.

Willard Pellinen

Willard Pellinen
McLeod County Surveyor
License No. 9626

Date January 3, 1993

OFFICE OF THE COUNTY RECORDER
MCLEOD COUNTY, MINNESOTA.

I hereby certify that this document was filed in this office at 9 o'clock A. M. on the 6th day of January, 1993.

Carmon Holter, County Recorder

By _____, Deputy

Document No. 249902

WEST QUARTER corner, Section 19, Township 116 North, Range 30 West

Certificate of Location of Government Corner

1855. This corner was originally established by the General Land Office. John Ryan set a post and deposited charcoal, dug pits and trench, built mound and planted osage orange seeds at the corners of the mound.

October 29, 1976. McCombs Knutson Associates (Dickman Knutson, county surveyor) found a 3/4 inch iron rod in the center line of the north-south road, fences east and west. They took reference ties.

September 10, 1985. We found the 3/4 inch rod down 5 inches below the surface and took new reference ties.

December 1, 1992. We found the iron rod down 6 inches below the road surface and took new ties.

The iron rod is accepted as marking the quarter corner. It fits occupation lines, the center line of the north-south road and the fences to the east and west.

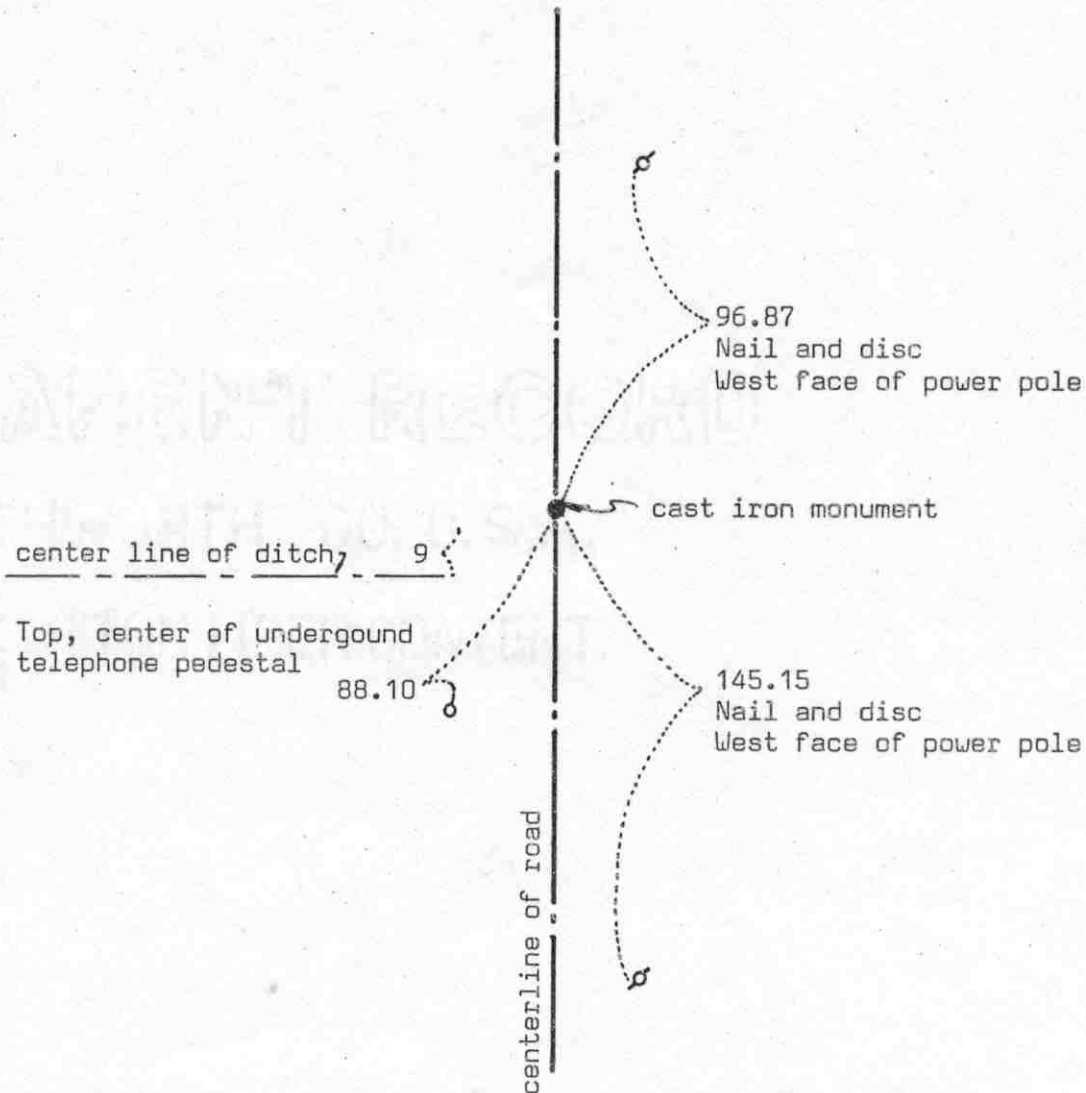
Certificate of Location of Government Corner

SKETCH OF REFERENCE TIES
(NO SCALE)



SECTION 20

SECTION 21



Statement of evidence relative to this corner location on sheet 2

I hereby certify that this document was prepared by me or under my direct supervision.

Willard Pellinen
Willard Pellinen
McLeod County Surveyor
License No. 9626

Date 3/14/90

OFFICE OF THE COUNTY RECORDER
MCLEOD COUNTY, MINNESOTA.

I hereby certify that this document was filed in this office at 4 o'clock P.M. on the 19th day of March, 1990.

Carmen Ostlie, County Recorder
By _____, Deputy

Document No. 232391

EAST QUARTER corner, Section 20, Township 116 North, Range 30 West

Certificate of Location of Government Corner

This corner was originally set in 1855 by Thomas Simpson of the General Land Office. He "set quarter section post in mound with trench, pits, charred stake and osage orange seeds northeast and southwest."

March 7, 1980. Mr. Edward Schmidt, 41 years old, has owned farm in West Half of Section 21 for 18 years, said the east west quarter line of Section 21 is about 15 feet north of his driveway. He thought the culvert across the road is close to the quarter corner. Ditch running west is in the South Half of Section 20. Mr. Dan Duesterhoeft, 66 years old, in the SE $\frac{1}{4}$ of Section 17, also said the ditch is in the South Half of Section 20. We set a temporary corner, $\frac{1}{2}$ inch iron pipe, in the center line of the road over a "reading" with a metal locator. Using our temporary corner and the west quarter corner of Section 20, the fence in the west half of Section 20 is within $1\frac{1}{2}$ feet of being on line. A field line, the south line of the SW $\frac{1}{4}$ of the NE $\frac{1}{4}$ of Section 20 falls within 2 feet of being on line.

July 21, 1980. We found an old iron pipe below our temporary corner. Below this iron pipe we found an old culvert, down $3\frac{1}{2}$ feet below the surface. We set a McLeod County cast iron monument at the location of the iron pipe and took reference ties.

March 1, 1989. We found the monument in good condition and the reference ties good.

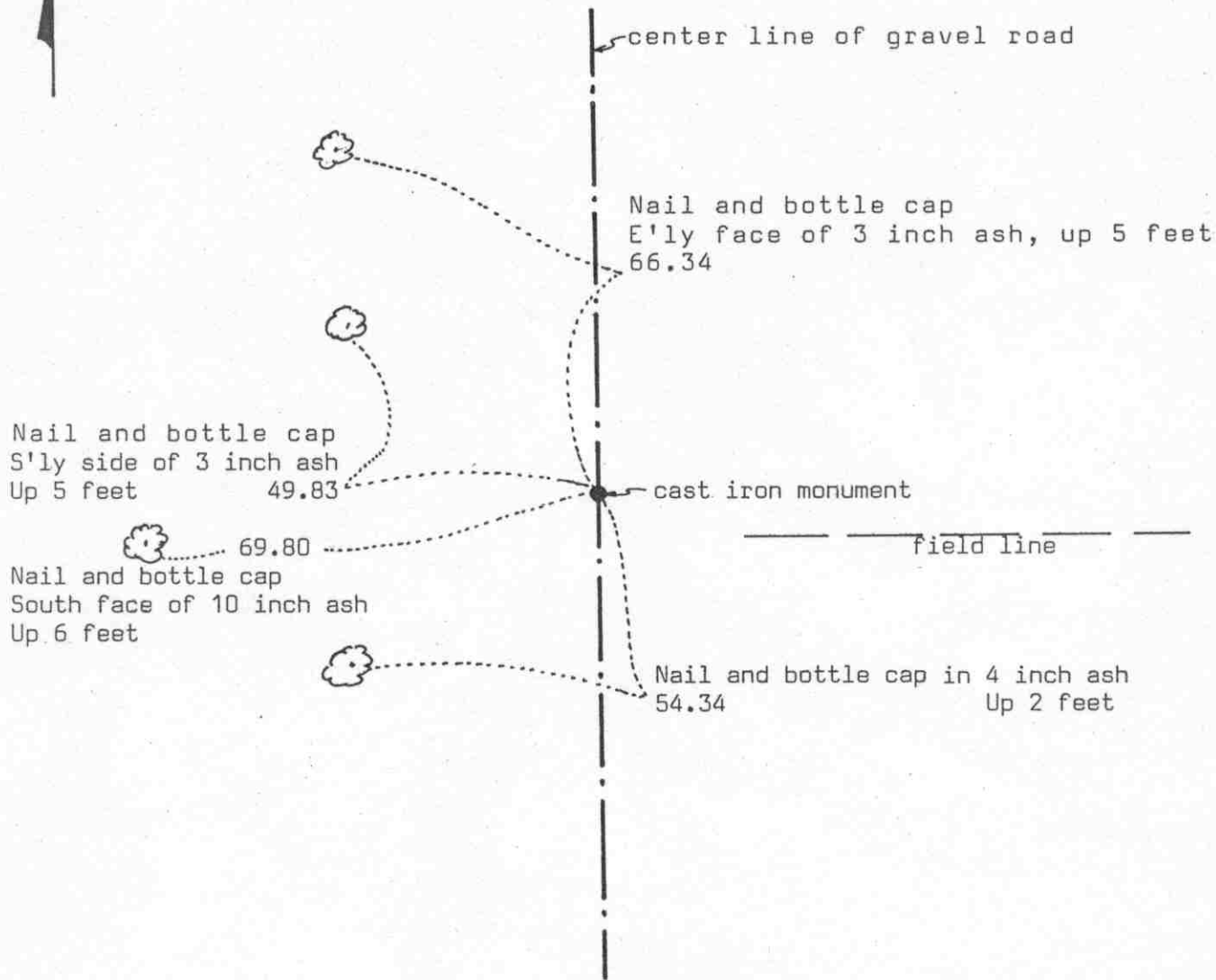
We accept the found iron pipe as having perpetuated the true location of the quarter corner.

Certificate of Location of Government Corner



SKETCH OF REFERENCE TIES

(NO SCALE)



Statement of evidence relative to this corner location on sheet 2

I hereby certify that this document was prepared by me or under my direct supervision.

Willard Pellinen

Willard Pellinen
McLeod County Surveyor
License No. 9626

Date 8/13/89

OFFICE OF THE COUNTY RECORDER
MCLEOD COUNTY, MINNESOTA.

I hereby certify that this document was filed in this office at 9 o'clock A.M. on the 15th day of Aug., 1989.

Carmen Gottlieb, County Recorder
By _____, Deputy

Document No. 229491

NORTHEAST corner, Section 20, Township 116 North, Range 30 West

Certificate of Location of Government Corner

This corner was set in 1855 by Thomas Simpson of the General Land Office. He "set post, corner to sections 16, 17, 20 and 21. Erected mound with trench and pits, charred stake and osage orange seeds at each angle."

January 1979. John Duesterhoeft, 60 years old, lived in Southeast Quarter of Section 17 all his life, said stone with wood stake was found at the corner about 48 years ago in center line of the road in line with a fence line east. Fence gone now, but a field line is to the east.

August 30, 1979. We dug for corner, John Tupa from Hutchinson with a backhoe. Found a stone and wood stake in center line of road about 5 feet north of the field line to the east. We reset the stone and took reference ties.

March 3, 1980. Dan Duesterhoeft, 66 years old, has lived in the Southeast Quarter of Section 17 all his life, said the center line of a ditch about a quarter mile to the west should be on the section line. He said his father found a stone and wood stake at the center line of the road, field line to the east should be close to line. Lester Hahn, 65 years old, lived in the Northeast Quarter of Section 20 for 31 years also said the ditch should be on line.

March, 1980. We checked the ditch for line and found the center line was on line between the found stone and the north quarter corner of Section 20.

June 18, 1982. We replaced the stone with a McLeod County cast iron monument and took reference ties.

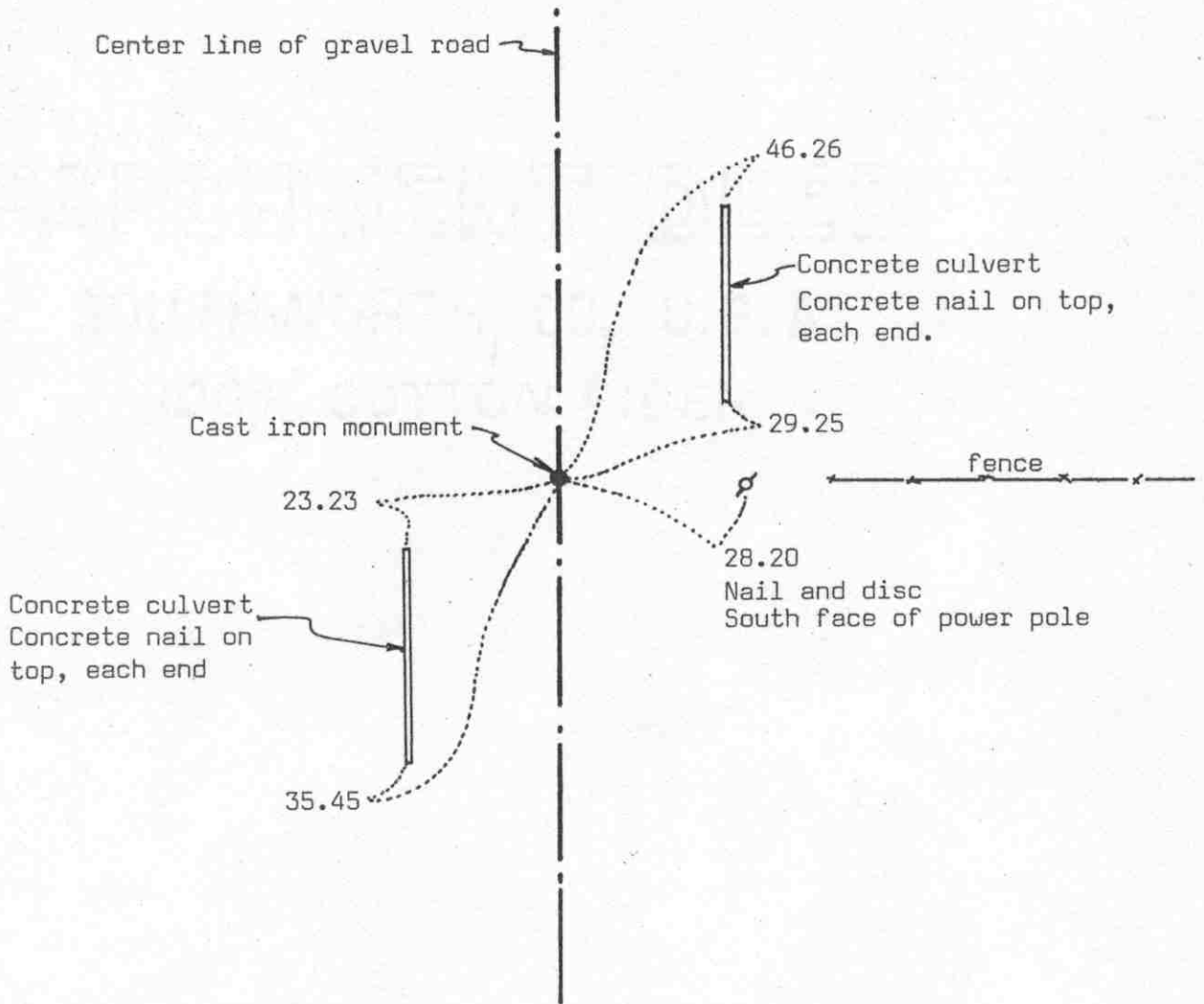
February 28, 1989. We found the cast iron monument in good condition and the reference ties good.

We accept the stone and wood stake as having perpetuated the correct location of the section corner.

Certificate of Location of Government Corner



SKETCH OF REFERENCE TIES
(NO SCALE)



Statement of evidence relative to this corner location on sheet 2

I hereby certify that this document was prepared by me or under my direct supervision.

Willard Pellinen

Willard Pellinen
McLeod County Surveyor
License No. 9626

Date 8/7/89

OFFICE OF THE COUNTY RECORDER
MCLEOD COUNTY, MINNESOTA.

I hereby certify that this document was filed in this office at 9 o'clock A.M. on the 15th day of Aug., 1989.

Carmen Gottlieb, County Recorder

By _____, Deputy

Document No. 229492

NORTH QUARTER corner, Section 20, Township 116 North, Range 30 West

Certificate of Location of Government Corner

This corner was originally set in 1855 by Thomas Simpson of the General Land Office. He "set quarter section post in mound with trench and pits, charred stake and osage orange seeds northeast and southwest."

1932. County Highway Department field notes show they found a stone at this corner.

August 30, 1979. We dug for the corner, John Tupa from Hutchinson with a backhoe. We found a 10 inch diameter stone, took a photo and tied off. Our distance to the northwest corner of Section 20 is within a few tenths of a foot of the 1932 distance by the Highway Department.

July 9, 1980. We set a McLeod County cast iron monument at the corner.

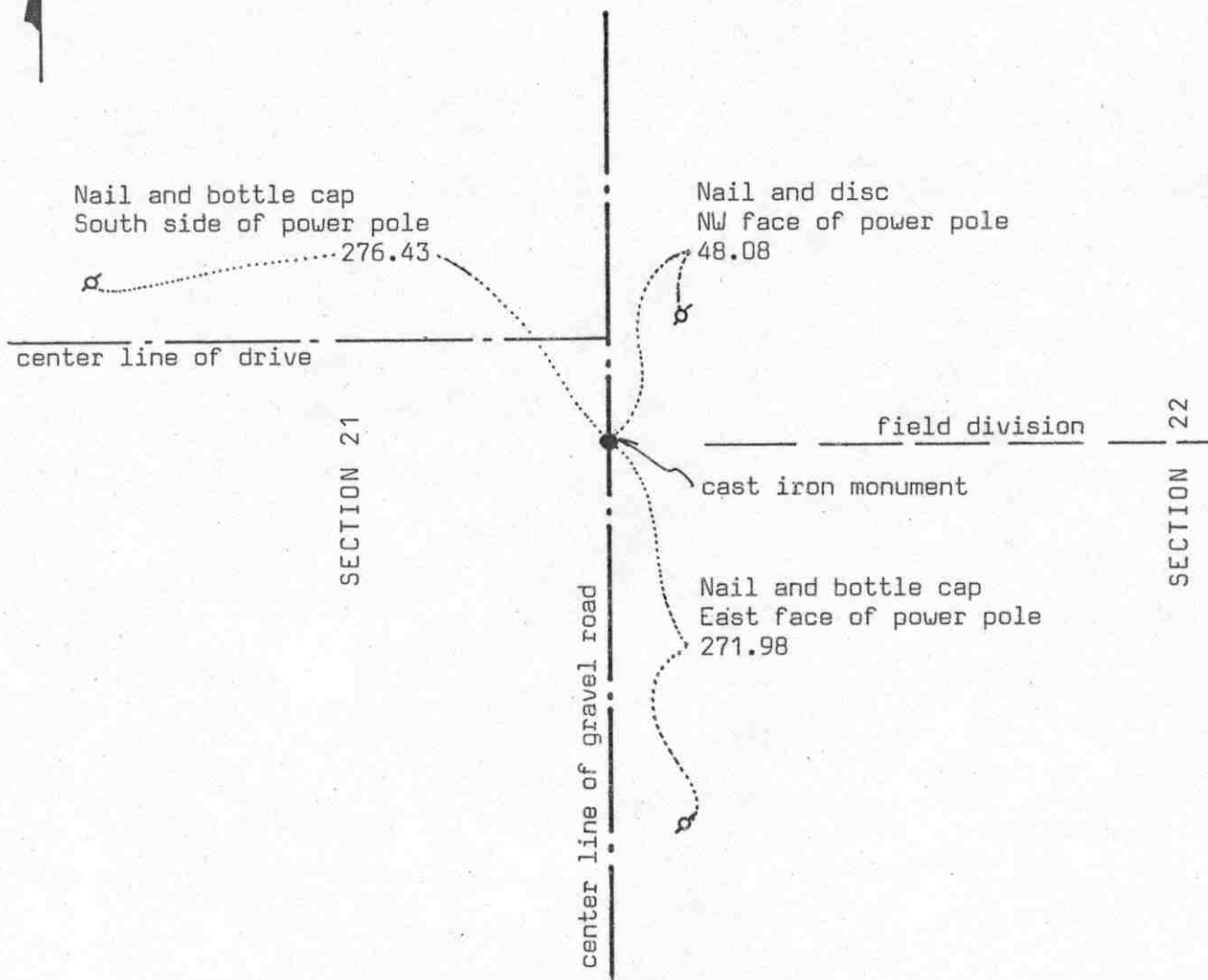
February 28, 1989. We found the monument in good condition and the reference ties good.

We believe the stone we found was the same stone found in 1932 and that it had perpetuated the true quarter corner.

Certificate of Location of Government Corner



SKETCH OF REFERENCE TIES
(NO SCALE)



Statement of evidence relative to this corner location on sheet 2

I hereby certify that this document was prepared by me or under my direct supervision.

Willard Pellinen

Willard Pellinen
McLeod County Surveyor
License No. 9626

Date 2/4/90

OFFICE OF THE COUNTY RECORDER
MCLEOD COUNTY, MINNESOTA.

I hereby certify that this document was filed in this office at 3 o'clock P.M. on the 27th day of Feb, 1990.

Carman Potlie, County Recorder

By _____, Deputy

Document No. 232086

EAST QUARTER corner, Section 21, Township 116 North, Range 30 West

Certificate of Location of Government Corner

This corner was originally set in 1855 by Thomas Simpson of the General Land Office. He "set quarter section post in mound with trench, pits, charred stake and osage orange seeds northeast and southwest."

January 3, 1979. We measured the east line of the Northeast Quarter of Section 21 and set a temporary quarter corner on the center line of the road in line with a field line to east.

January 9, 1979. We measured the east line of the Southeast Quarter of Section 21 and found our temporary corner was very nearly half way between the section corners. This was about 16 feet south of the center line of a driveway going west. Mr. Morris Rettman, 28 years old, lived in the Northeast Quarter of Section 21 all his life, said the driveway running west is all in the Northeast Quarter of Section 21. He said the corner should be in the center line of the road in line with the field line east. He said there used to be a fence running west, in line with the field line. Mr. Carl Otto, 82 years old, has lived in the Southeast Quarter of Section 21 all his life, agrees with Mr. Rettman.

August 30, 1979. We dug for the corner, John Tupa from Hutchinson with a backhoe. We dug along the center line of the road in line with the field line. We dug a hole 16 feet long, 8 feet wide and $3\frac{1}{2}$ feet deep, but found nothing.

March 5, 1980. We set a spike on the center line of the road in line with the field line running east. This falls about 8.7 feet east of a straight line between the section corners. This also is very nearly half way between the section corners.

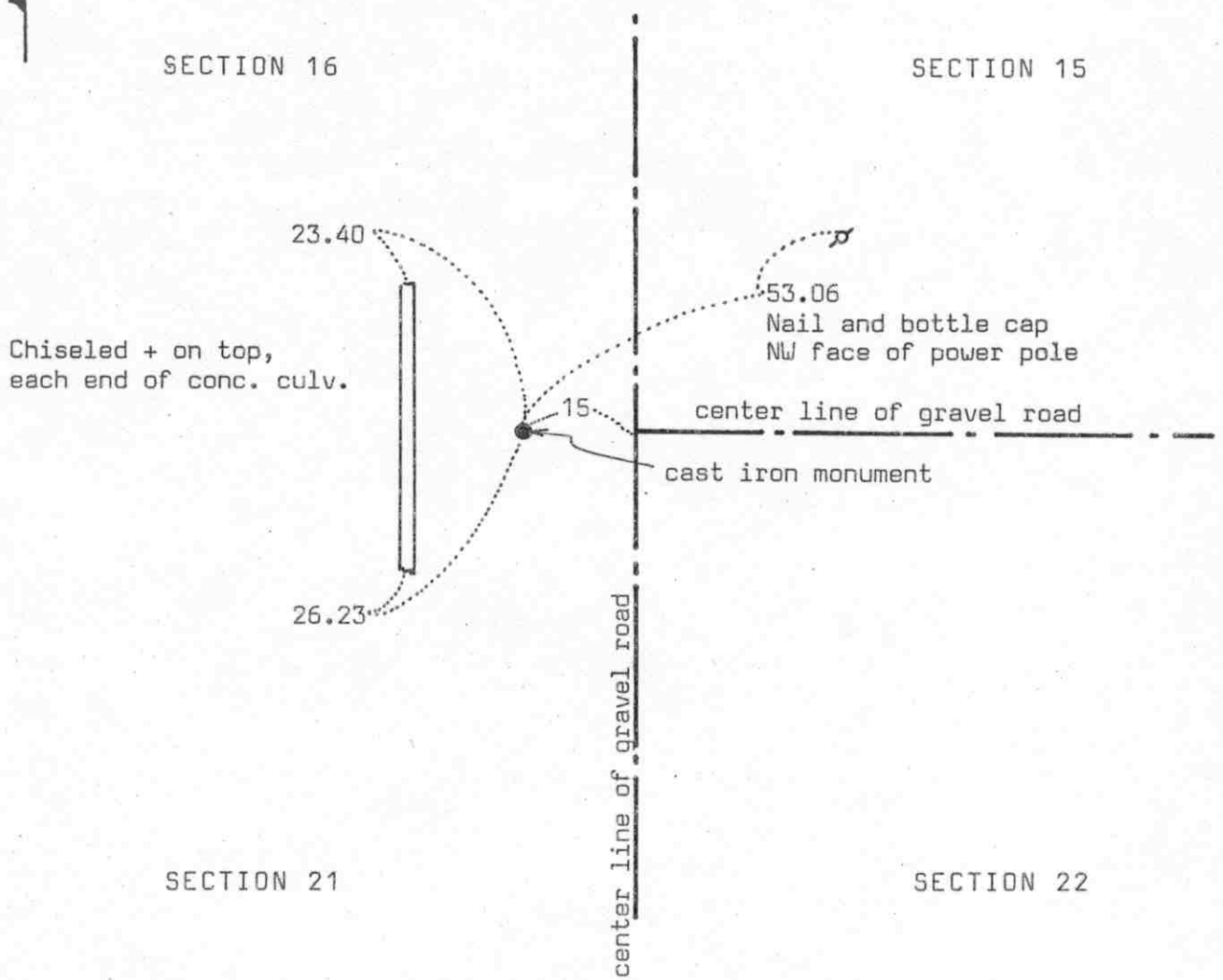
July 9, 1980. We set a McLeod County cast iron monument and took additional reference ties.

March 1, 1989. We found the monument in good condition and the reference ties good.

We believe the center line of the road and the field line have perpetuated the correct location of the quarter corner.

Certificate of Location of Government Corner

SKETCH OF REFERENCE TIES
(NO SCALE)



Statement of evidence relative to this corner location on sheet 2

I hereby certify that this document was prepared by me or under my direct supervision.

Willard Pellinen
Willard Pellinen
McLeod County Surveyor
License No. 9626

Date 2/4/90

OFFICE OF THE COUNTY RECORDER
MCLEOD COUNTY, MINNESOTA.

I hereby certify that this document was filed in this office at 3 o'clock P.M. on the 27th day of Feb, 1990.

Carmen Potlie, County Recorder
By _____, Deputy

Document No. 232085

NORTHEAST corner, Section 21, Township 116 North, Range 30 West

Certificate of Location of Government Corner

This corner was originally set in 1855 by Thomas Simpson of the General Land Office. He "set post, corner to Sections 15, 16, 21 and 22. Erected mound with trench, pits, charred stake and osage orange seeds at each angle."

May 17, 1976. Mr. Anton Schmidt, in Southwest Quarter of Section 15 all his life, said section corner is on the west side of the road. We dug for the corner, John Tupa from Hutchinson with a backhoe, and found an angle iron about 15 feet west of the center line and in line with the center line of the road running east. Mr. Schmidt thought this was the correct corner. We took a photo and reference ties.

August 30, 1978. We set a McLeod County cast iron monument at the corner.

March 1, 1989. We found the cast iron monument in good condition and the reference ties good.

There being no evidence to the contrary, we accept the angle iron we found as having perpetuated the location of the section corner.

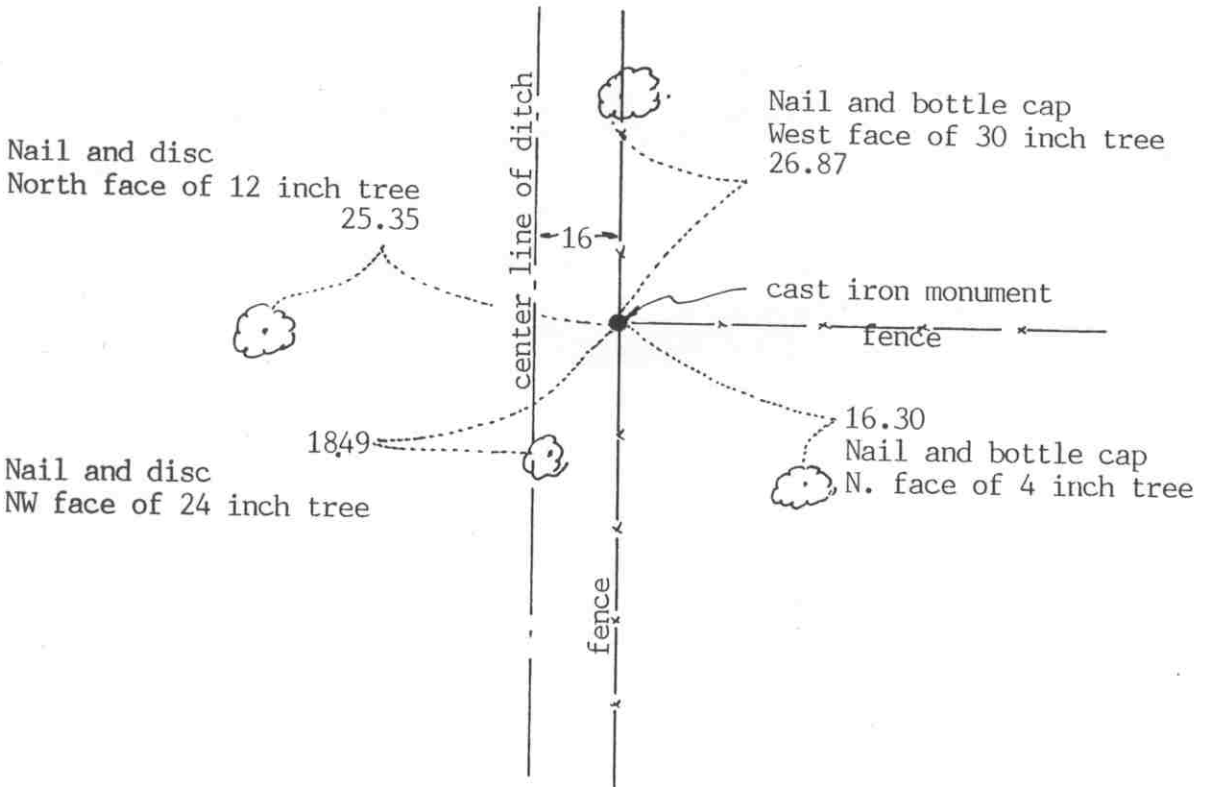
Certificate of Location of Government Corner



SKETCH OF REFERENCE TIES

(NO SCALE)

SECTION 16



SECTION 21

Statement of evidence relative to this corner location on sheet 2

I hereby certify that this document was prepared by me or under my direct supervision.

Willard Pellinen

Willard Pellinen
McLeod County Surveyor
License No. 9626

Date February 5, 1991

OFFICE OF THE COUNTY RECORDER
MCLEOD COUNTY, MINNESOTA.

I hereby certify that this document was filed in this office at 9 o'clock A.M. on the 7th day of Feb, 1991.

Carmen Ostlie, County Recorder

By _____, Deputy

Document No. 237441

Certificate of Location of Government Corner

This corner was established by the government in August, 1855. Thomas Simpson set a post in a mound with trench, pits, charred stake and he planted osage orange seeds at the northeast and southwest corners of the mound.

January 9, 1979. Mr. Robert Theuringer, 55 years old, who has lived in the Southwest Quarter of Section 21 for 27 years and Mr. Morris Rettman, 28 years old, in the Northeast Quarter of Section 21 all his life, both say the old fence intersection is the corner. We measured the north line of Section 21 and set an iron pipe at the fence intersection. This was within a few feet of being on a split between the section corners. A field line running north $\frac{1}{4}$ mile west is within 2 feet of being half way between this fence intersection and the northwest corner of Section 21.

June 28, 1979. We found the remains of the old corner fence post and set a McLeod County cast iron monument and took reference ties.

We feel this old fence corner has perpetuated the correct location of the quarter corner.

February 22, 1990. We found the monument in good condition and checked the reference ties.

POINT ON EAST LINE ~~corner~~, Section 22, Township 116 North, Range 30 West

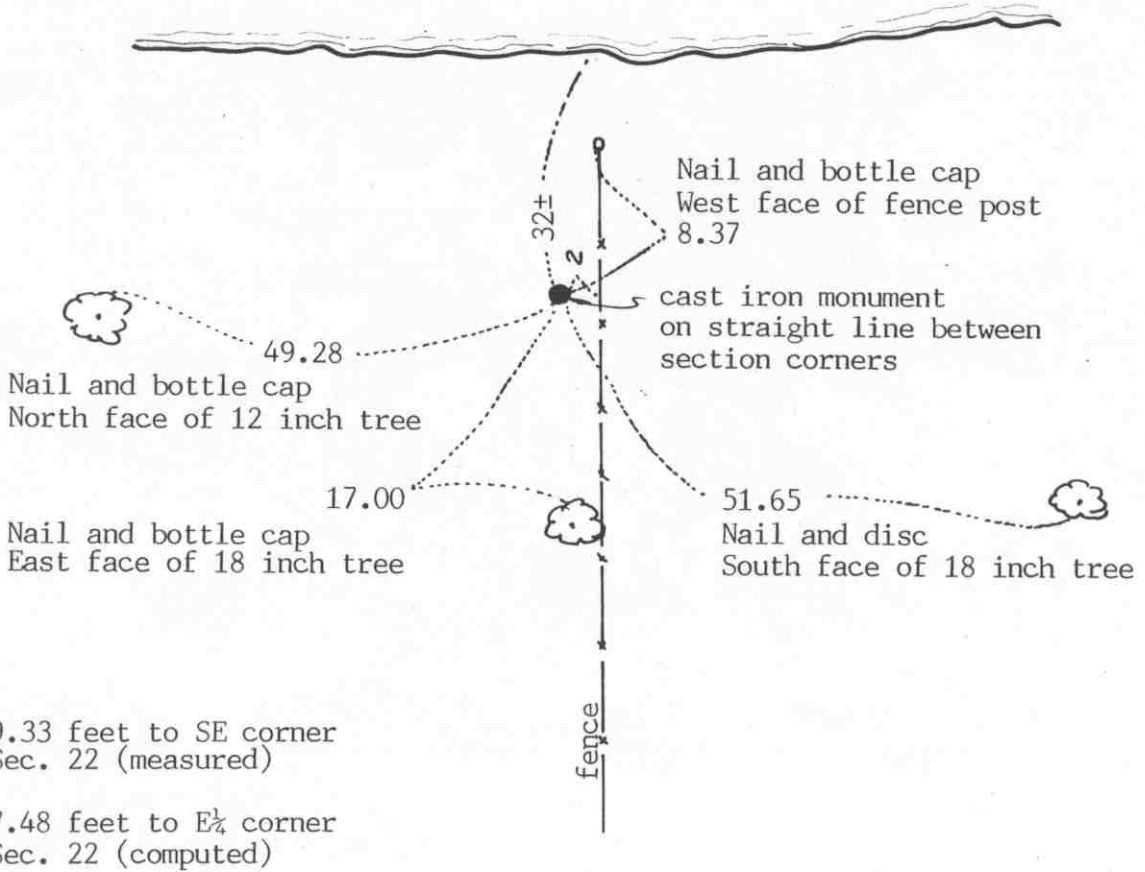
Certificate of Location of Government Corner

SKETCH OF REFERENCE TIES (NO SCALE)

LAKE ALLEN

SECTION 22

SECTION 23



Statement of evidence relative to this corner location on sheet 2

I hereby certify that this document was prepared by me or under my direct supervision.

Willard Pellinen
Willard Pellinen
McLeod County Surveyor
License No. 9626

Date November 8, 1992

OFFICE OF THE COUNTY RECORDER
MCLEOD COUNTY, MINNESOTA.

I hereby certify that this document was filed in this office at 9 o'clock A.M. on the 20th day of November, 1992.

Carmen St. Louis Gilder, County Recorder

By _____, Deputy

Document No. 248986

Point on east line

~~CORNER~~ - Section 22, Township 116 North, Range 30 West

Certificate of Location of Government Corner

July 9, 1980. We set a McLeod County cast iron monument along the east line of Section 22, south of Lake Allen. This monument is on a straight line between the northeast and southeast corners of Section 22. We measured 1559.33 feet to the southeast corner and computed 1127.48 feet to the east quarter corner which falls in the lake.

February 21, 1990. We found the monument in good condition and checked the reference ties.

POINT ON EAST LINE

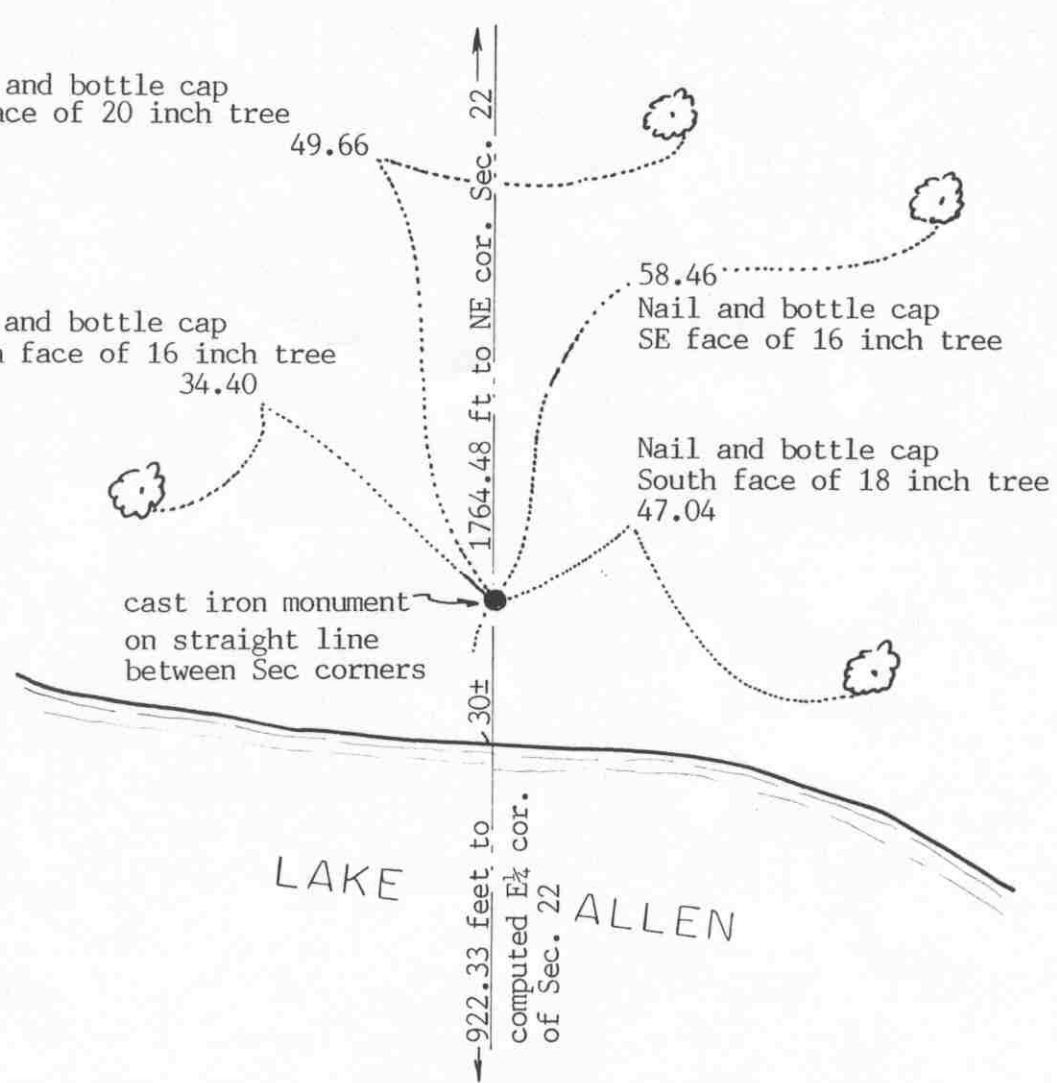
corner, Section 22, Township 116 North, Range 30 West

Certificate of Location of Government Corner

SKETCH OF REFERENCE TIES (NO SCALE)

SECTION 22

SECTION 23



Statement of evidence relative to this corner location on sheet 2

I hereby certify that this document was prepared by me or under my direct supervision.

Willard Pellinen

Willard Pellinen
McLeod County Surveyor
License No. 9626

Date Nov. 8, 1992

OFFICE OF THE COUNTY RECORDER
MCLEOD COUNTY, MINNESOTA.

I hereby certify that this document was filed in this office at 9 o'clock A. M. on the 20th day of November, 1992.

Carmen K. Miller, County Recorder

By _____, Deputy

Document No. 248985

Point on east line

~~corner~~, Section 22, Township 116 North, Range 30 West

Certificate of Location of Government Corner

July 9, 1980. We set a McLeod County cast iron monument along the east line of Section 22, north of Lake Allen. This point is on a straight line between the northeast and southeast corners of Section 22. We measured 1764.48 feet to the northeast corner. We computed a distance of 922.33 feet to the east quarter corner which is in the lake.

March 1, 1989. We found the monument in good condition and checked the reference ties.

Certificate of Location of Government Corner



SKETCH OF REFERENCE TIES

(NO SCALE)

SECTION 15

SECTION 14

fence

Chiseled + on top,
each end of conc. culv.

36.34

34.49

center line of gravel road

cast iron monument

28.02

Nail and bottle cap
West face of power pole

102.70

Punch hole on top
South end of CMP

SECTION 22

SECTION 23

Statement of evidence relative to this corner location on sheet 2

I hereby certify that this document was prepared by me or under my direct supervision.

Willard Pellinen

Willard Pellinen
McLeod County Surveyor
License No. 9626

Date 2/3/90

OFFICE OF THE COUNTY RECORDER
MCLEOD COUNTY, MINNESOTA.

I hereby certify that this document was filed in this office at 3 o'clock P.M. on the 27th day of Feb, 1990.

Carmin Potlie, County Recorder

By _____, Deputy

Document No. 232087

Certificate of Location of Government Corner

This corner was originally set by the General Land Office in 1855. Thomas Simpson "set post, corner to Sections 14, 15, 22 and 23. Erected mound with trench, pits, charred stake and osage orange seeds at each angle."

November 12, 1973. We found a stone down 1 foot below the road surface, on the center line, in line with a fence to the north. We set a $\frac{1}{2}$ inch diameter iron pipe and took reference ties.

August 5, 1974. We replaced the iron pipe with a McLeod County cast iron monument. Mr. Dale Kenning, lives in the South Half of Section 15, thinks the fence is on the north-south quarter line of Section 15. Other owners agree.

March 1, 1989. We found the cast iron monument in good condition and the reference ties ok.

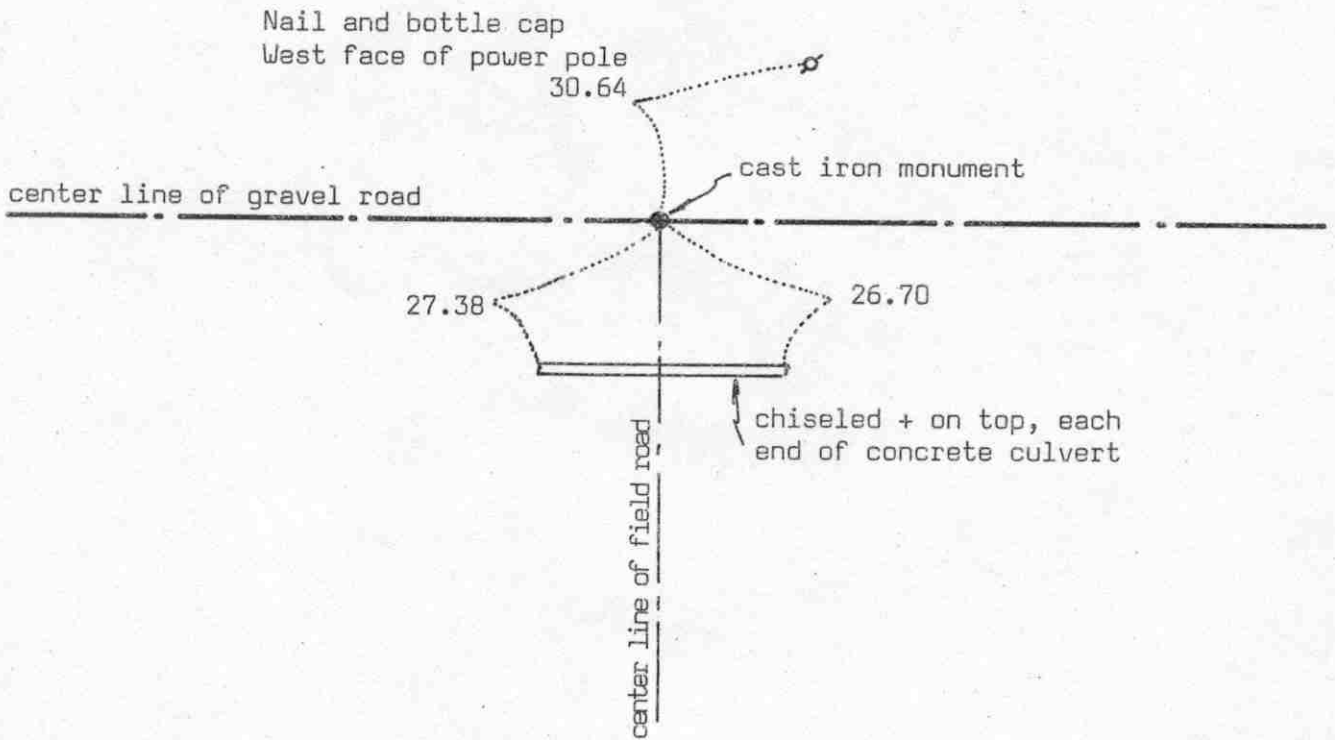
There being no evidence to the contrary, we accept the found stone as having perpetuated the correct location of the section corner.

Certificate of Location of Government Corner



SKETCH OF REFERENCE TIES
(NO SCALE)

SECTION 15



SECTION 22

Statement of evidence relative to this corner location on sheet 2

I hereby certify that this document was prepared by me or under my direct supervision.

Willard Pellinen
Willard Pellinen
McLeod County Surveyor
License No. 9626

Date 2/4/90

OFFICE OF THE COUNTY RECORDER
MCLEOD COUNTY, MINNESOTA.

I hereby certify that this document was filed in this office at 3 o'clock P.M. on the 27th day of Feb, 1990.

Carmen Dottie, County Recorder

By _____, Deputy

Document No. 232088

NORTH QUARTER corner, Section 22, Township 116 North, Range 30 West

Certificate of Location of Government Corner

This corner was originally set in 1855 by Thomas Simpson of the General Land Office. He "set quarter section post in mound with trench, pits, charred stake and osage orange seeds at each angle."

May 17, 1976. We dug for the corner, John Tupa from Hutchinson with a backhoe. Down $3\frac{1}{2}$ feet below the road surface we found a 16 inch diameter stone, set with a sharp point up. We took a photo and reference ties. This stone was in the center line of the township road in line with the center line of a field road to the south. Mr. Anton Schmidt, 76 years old, lives in the Northwest Quarter of Section 22, said this is the correct location of the corner. The drive is centered on the quarter line. Corner falls about 15 feet west of being half way between the section corners.

August 30, 1978. We set a McLeod County cast iron monument at the corner.

March 1, 1989. We found the monument in good condition and the reference ties good.

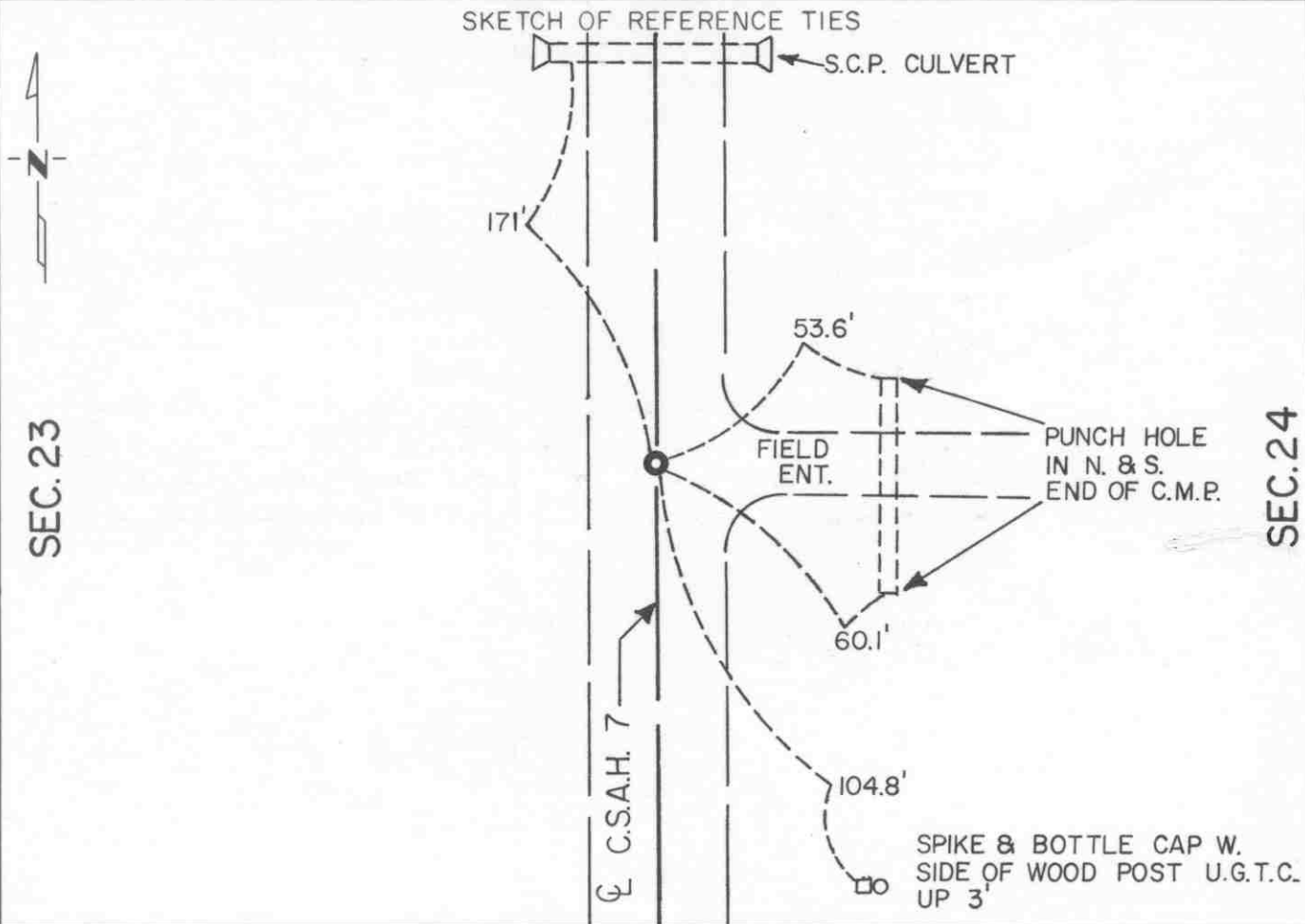
We believe the stone we found has perpetuated the correct location of the quarter corner.

CERTIFICATE OF LOCATION OF GOVERNMENT CORNER

East Quarter Corner of Section 23, Township 116 N, Range 30 W, 5th P.M.
STATE OF MINNESOTA, County of McLeod

At the corner location shown on the sketch:

- On Apr. 12, 1990 found a cast iron monument at the road surface
DATE
- left monument as found, lowered monument, removed monument (explain)
- On _____ placed a _____
DATE



Statement of evidence relative to this corner location is on back of page.

I hereby certify that this document and the data contained herein was prepared by me or under my direct supervision

Robert G. Jones 8-20-91
SIGNATURE DATE

Registration No. 11864

- Land Surveyor, Professional Engineer
- County Surveyor, County Engineer

OFFICE OF THE COUNTY RECORDER

County of McLeod

I hereby certify that this document was filed in the Co. Recorders office at 2 P.M. on the 18th day of Sep A.D. 1991

County Recorder Armen Ostlie

By _____, Deputy

DOCUMENT NO. 241059

Statement of Evidence:

East Quarter Corner Section 23, T 116 N, R 30 W

- 1855 - The original Public Land Survey was completed by Thomas Simpson. A wood post was set over a charred stake in a dirt mound to mark the corner. Trenches and pits were dug to build the mound. Osage orange was planted at the northeast and southwest corners of the mound.
- 1973 - Dickman Knutson, McLeod County Surveyor, found an iron pin, which was generally accepted as the corner location. The pin was probably set in 1935 by the McLeod County Highway Department. Reference ties were set.
- 1974 - Dickman Knutson dug for the corner. A 12" by 12" by 24" long field stone was found 4 1/2 feet below the road surface and directly below the iron pin. A McLeod County cast iron monument was set directly above the stone to replace the iron pin. It was located at the centerline of a north/south road and in line with a fence to the east.
- 1990 - R. C. Jones, Registered Land Surveyor with Mn/DOT, found the cast iron monument at the road surface. New reference ties were set because all the old ones had been destroyed.

The cast iron monument is accepted as the corner location because it fits long standing occupation lines (the fence line to the east is gone but there is a row of small trees and bushes at the same location), it perpetuates older monumentation, and it is 1.66 feet north and 5.80 feet east of the lost location.

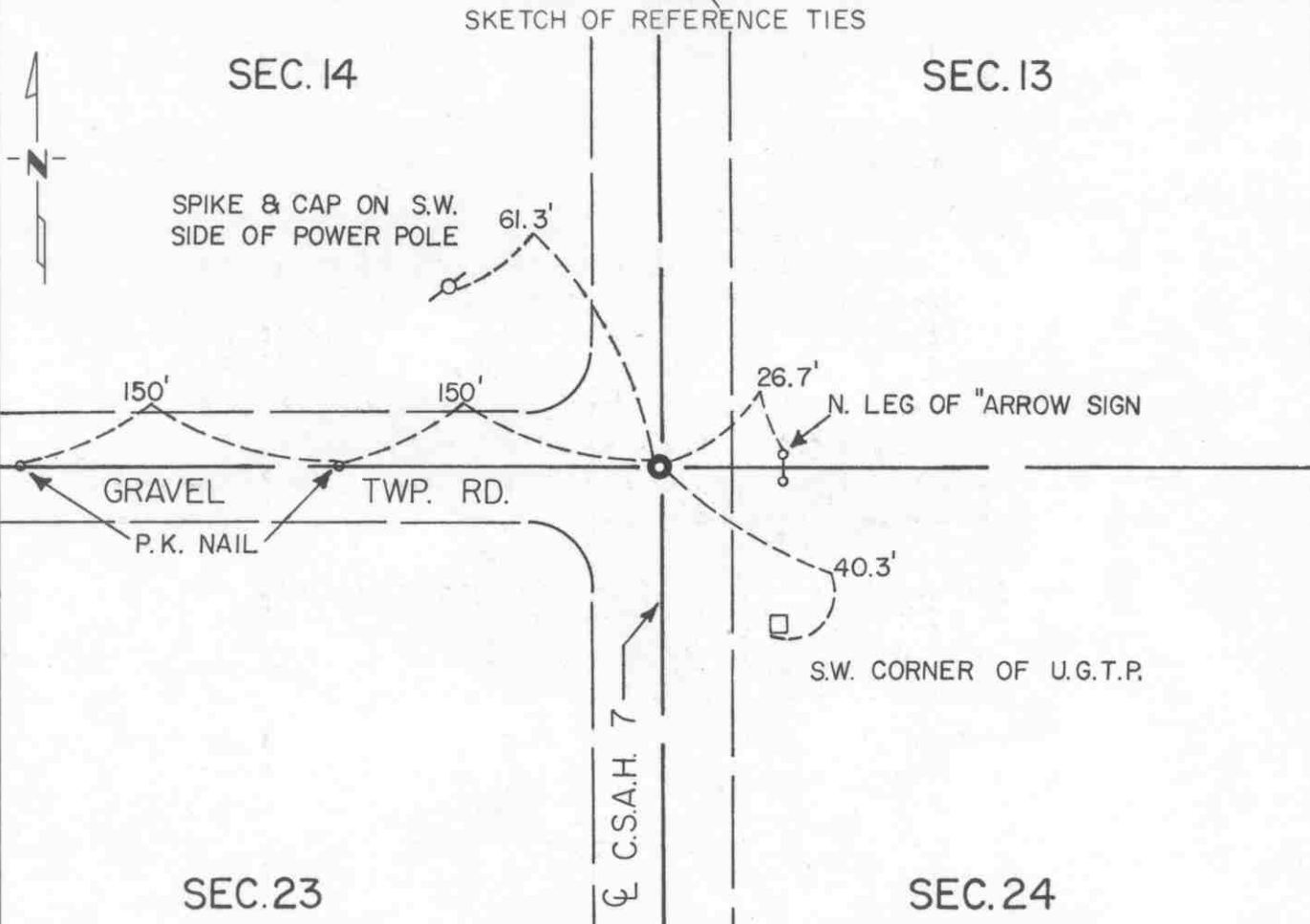
For additional information, contact the Mn/DOT Surveys Section at Willmar, Mn 56201.

CERTIFICATE OF LOCATION OF GOVERNMENT CORNER

Northeast Corner of Section 23, Township 116 N, Range 30 W, 5 th P.M.
 STATE OF MINNESOTA, County of McLeod

At the corner location shown on the sketch:

- On Apr. 12, 1990 found a cast iron monument at the road surface
DATE
- left monument as found, lowered monument, removed monument (explain)
- On _____ placed a _____
DATE



Statement of evidence relative to this corner location is on back of page.

I hereby certify that this document and the data contained herein was prepared by me or under my direct supervision.

Robert Jones 8-20-91
SIGNATURE DATE

Registration No. 11864

Land Surveyor, Professional Engineer
 County Surveyor, County Engineer

OFFICE OF THE COUNTY RECORDER
 County of McLeod

I hereby certify that this document was filed in the Co. Recorders office at 2 P.M. on the 18th day of Sep A.D. 1991

County Recorder Carmen Ostlie
 By _____, Deputy

DOCUMENT NO. 241058

Statement of Evidence:

Northeast Corner Section 23, T 116 N, R 30 W

- 1855 - The original Public Land Survey was completed by Thomas Simpson. A wood post was set over a charred stake in a dirt mound to mark the corner. Trenches and pits were dug to build the mound. Osage orange was planted at the corners of the mound.
- 1973 - Dickman Knutson, McLeod County Surveyor, found an iron pin at the surface of the road. He thought it was probably set by the McLeod County Highway Department in 1935.
- 1974 - Dickman Knutson dug for the corner and found a rotted wood stake in natural ground about 8 1/2 feet below the road surface. Reference ties were set and a McLeod County cast iron monument was set directly over the wood stake. It was located at the centerline of a north/south road, at the centerline of a road to the west, and in line with a field division and row of old fence posts to the east.
- 1990 - R. C. Jones, Registered Land Surveyor with Mn/DOT, found the cast iron monument at the road surface. New reference ties were set because the old ones had been destroyed.

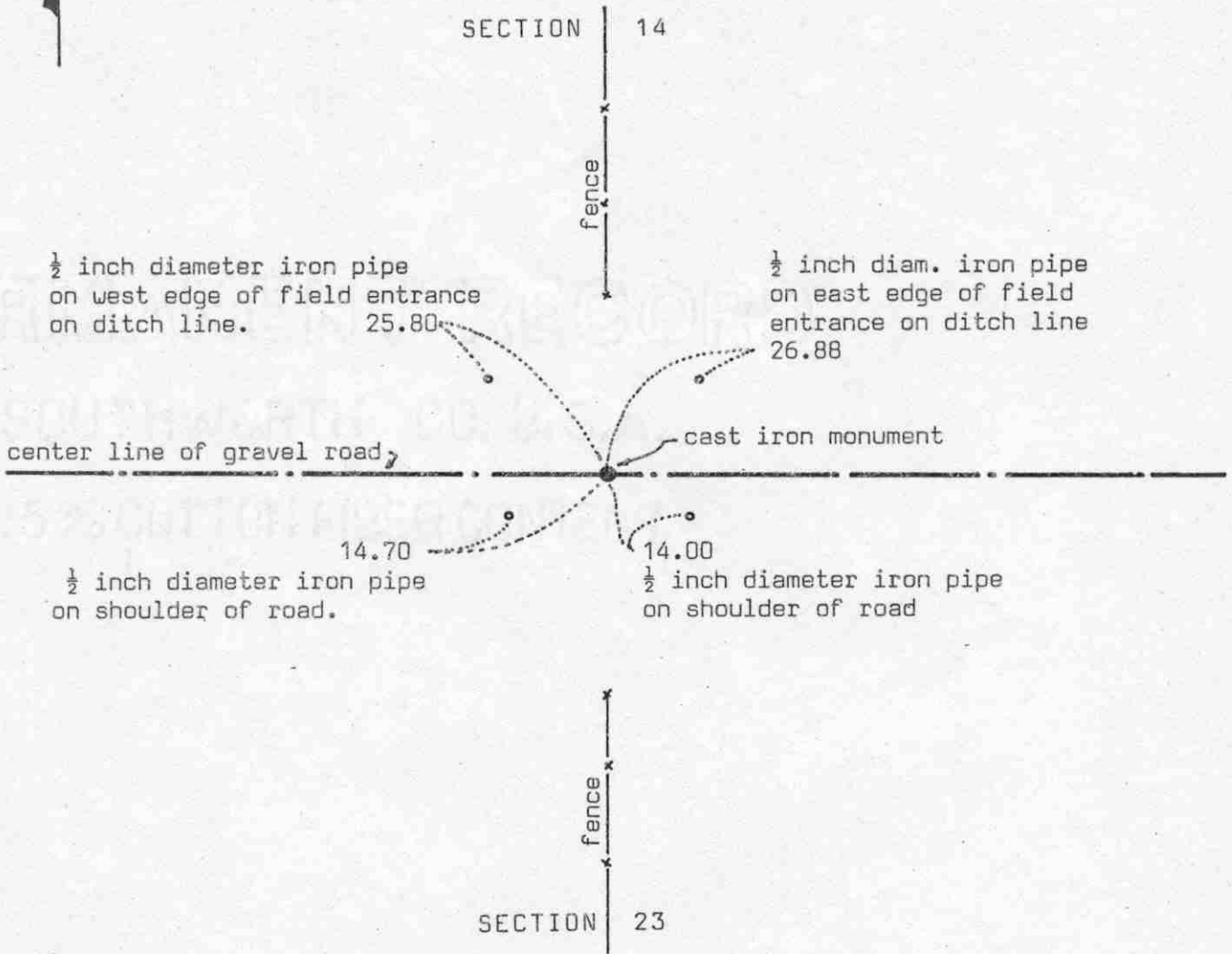
The cast iron monument is accepted as the corner location because the rotted wood stake directly below it may very well be the remains of the original Public Land Survey monument. It is at the centerline of a north/south road, the centerline of a road to the west, and in line with a field division to the east.

For additional information, contact the Mn/DOT Surveys Section at Willmar, Mn 56201.

Certificate of Location of Government Corner



SKETCH OF REFERENCE TIES
(NO SCALE)



Statement of evidence relative to this corner location on sheet 2

I hereby certify that this document was prepared by me or under my direct supervision.

Willard Pellinen

Willard Pellinen
McLeod County Surveyor
License No. 9626

Date 2/3/90

OFFICE OF THE COUNTY RECORDER
MCLEOD COUNTY, MINNESOTA.

I hereby certify that this document was filed in this office at 3 o'clock P.M. on the 27th day of Feb, 1990.

Carmen Pottier, County Recorder

By _____, Deputy

Document No. 232089

NORTH QUARTER corner, Section 23, Township 116 North, Range 30 West

Certificate of Location of Government Corner

This corner was originally set by the General Land Office in 1855. Thomas Simpson "set quarter section post in mound with trench, pits, charred stake and osage orange seeds northeast and southwest."

February 26, 1974. We measured the north line of Section 26 and set a temporary north quarter corner in the center line of the road in line with fences north and south.

January 11, 1974. Louis Reckow, 56 years old, has lived in the Southeast Quarter of Section 14 all his life, said there is a stone at the corner. He thought it was in the center line of the road in line with the fences north and south.

August 30, 1979. We dug for the corner, John Tupa from Hutchinson with a backhoe. Down at $1\frac{1}{2}$ feet below the surface of the road we found a 6 inch diameter stone with a wood stake on the north side of the stone. We took a photo and took reference ties. Moved the stone to make room for the cast iron monument.

March 7, 1980. We set a PK nail at the corner and took additional reference ties.

July 8, 1980. We set a McLeod County cast iron monument at the corner. This corner falls about 10-13 feet east of being half way between the section corners.

March 1, 1989. We found the monument in good condition and the reference ties good.

We accept the stone and wood stake we found in 1979 as having perpetuated the correct location of the quarter corner.

CERTIFICATE OF LOCATION OF GOVERNMENT CORNER

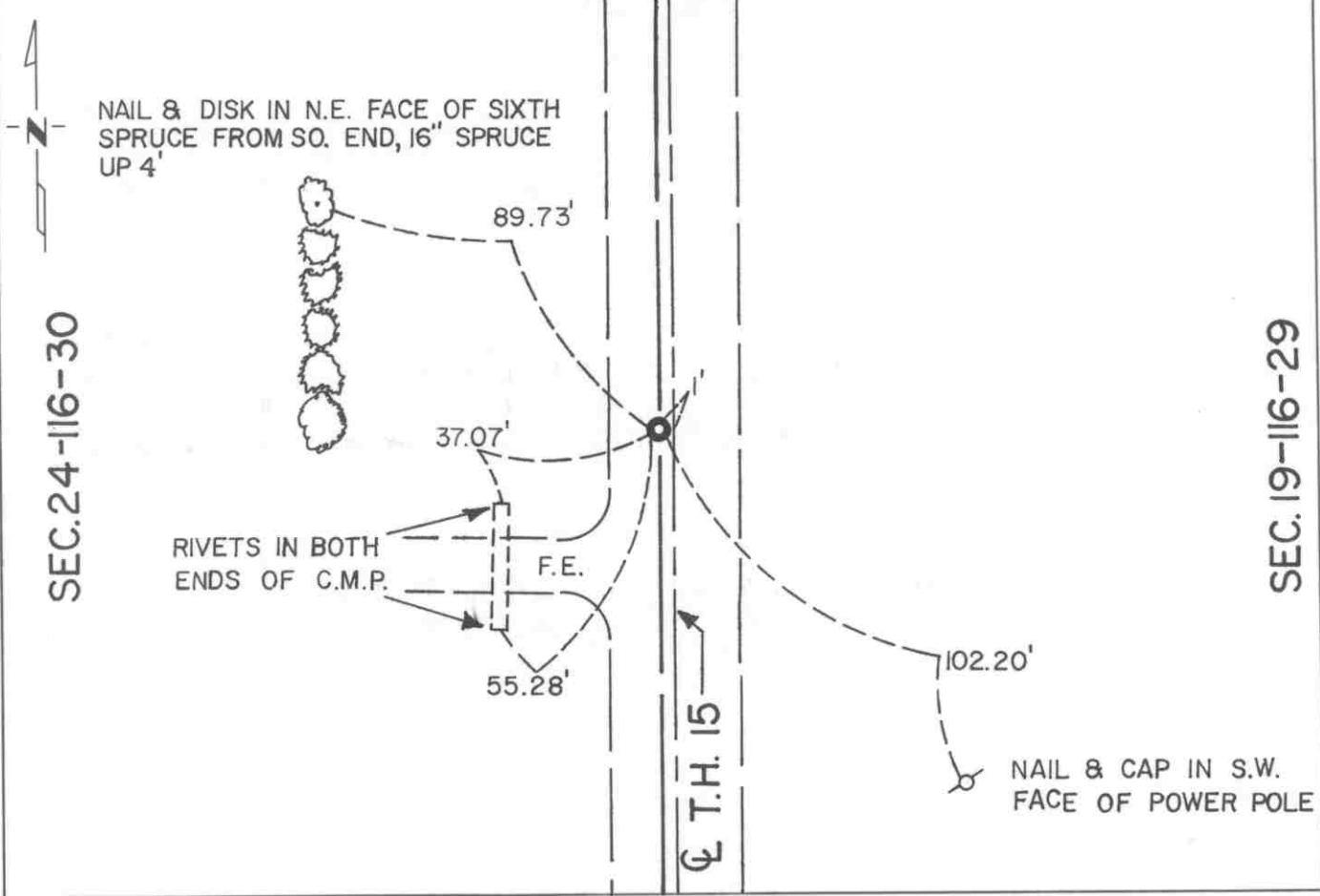
East Quarter _____ Corner of Section 24, Township 116 N, Range 30 W, 5th P.M.

STATE OF MINNESOTA, County of McLeod

At the corner location shown on the sketch:

- On Apr. 13, 1990 found a railroad spike at the road surface
DATE
- left monument as found, lowered monument, removed monument (explain)
- On _____ placed a _____
DATE

SKETCH OF REFERENCE TIES



Statement of evidence relative to this corner location is on back of page.

I hereby certify that this document and the data contained herein was prepared by me or under my direct supervision.

Robert J. Jans 8-20-91
SIGNATURE DATE

Registration No. 11864

Land Surveyor, Professional Engineer
 County Surveyor, County Engineer

OFFICE OF THE COUNTY RECORDER
County of McLeod

I hereby certify that this document was filed in the Co. Recorders office at 2 P.M. on the 18th day of Sept A.D. 1991

County Recorder Carmen Ostlie
By _____, Deputy

DOCUMENT NO. 241061

Statement of Evidence:

East Quarter Corner Section 24, T 116 N, R 30 W

- 1855 - The original Public Land Survey of the township line was completed by John Ryan. A wood post was set over a deposit of charcoal in a dirt mound to mark the corner. Trenches and pits were dug to build the mound. Osage orange was planted at the corners of the mound.
- 1941 - The Minnesota Highway Department right of way map shows the corner to be 1.0 foot west of T.H. 15 P.O.T. 1095+95.5. It was located at the centerline of a north/south road and in line with fences east and west.
- 1942 - All evidence of the corner was probably destroyed when T.H. 15 was graded.
- 1970 +/- Dickman Knutson, McLeod County Surveyor, found an iron pipe at the road surface. It was located 1 foot west of the centerline of T.H. 15.
- 1987 - Willard Pellinen, McLeod County Surveyor, found the iron pipe and set new reference ties.
- 1989 - Willard Pellinen reset the corner, which was destroyed by construction work on T.H. 15, from his 1987 reference ties.
- 1990 - R. C. Jones, Registered Land Surveyor with Mn/DOT, found a railroad spike at the road surface.

The railroad spike is accepted as the corner location because it was probably set by Pellinen in 1989 and it is found to be 1.30 feet west of T.H. 15 P.O.T. 1095+95.50, which closely fits the right of way map location.

For additional information, contact the Mn/DOT Surveys Section at Willmar, Mn 56201.

CERTIFICATE OF LOCATION OF GOVERNMENT CORNER

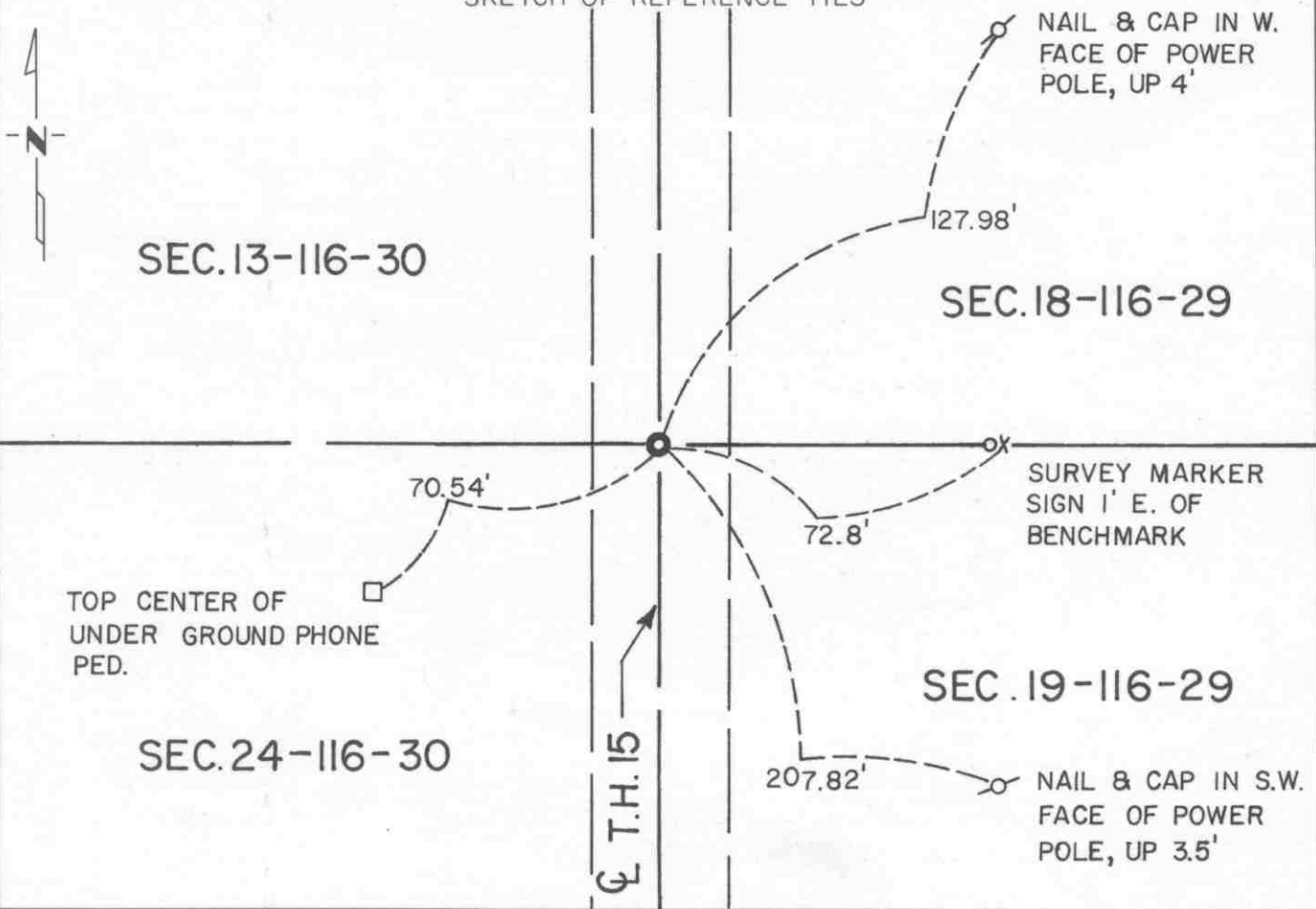
Northeast Corner of Section 24, Township 116 N, Range 30 W, 5th P.M.

STATE OF MINNESOTA, County of McLeod

At the corner location shown on the sketch:

- On April 16, 1990 found a railroad spike at the surface of T.H. 15, 0.31' East of C
DATE
- left monument as found, lowered monument, removed monument (explain)
- On _____ placed a _____
DATE

SKETCH OF REFERENCE TIES



Statement of evidence relative to this corner location is on back of page.

I hereby certify that this document and the data contained herein was prepared by me or under my direct supervision.

Robert G. Gams 8-26-91
SIGNATURE DATE

Registration No. 11864

- Land Surveyor, Professional Engineer
- County Surveyor, County Engineer

OFFICE OF THE COUNTY RECORDER

County of McLeod

I hereby certify that this document was filed in the Co. Recorders office at 2 P .M. on the 18th day of sep A.D. 1991

County Recorder Armen Ostlie

By _____, Deputy

DOCUMENT NO. 241060

Statement of Evidence:

Northeast Corner Section 24, T 116 N, R 30 W

- 1855 - The original Public Land Survey of the township line was completed by John Ryan. A wood post was set over a deposit of charcoal in a dirt mound to mark the corner. A pit was dug 8 links south of the corner.
- 1941 - The Minnesota Highway Department right of way map shows the corner to be at T.H. 15 P.O.T. 1122+72.0. It was located at the centerline of a north/south road and in line with a fence to the west.
- 1942 - All evidence of the corner was probably destroyed when T.H. 15 was graded.
- 1970 +/- Dickman Knutson, McLeod County Surveyor, found a spike and cap at the road surface and replaced it with a 1" diameter iron pipe.
- 1989 - Willard Pellinen, McLeod County Surveyor, set a railroad spike to mark the corner. It was set according to previous surveys that he made along the east lines of Sections 13 and 24. The iron pipe was apparently destroyed when T.H. 15 was reconstructed about 1987.
- 1990 - R. C. Jones, Registered Land Surveyor with Mn/DOT, found the railroad spike at the surface of T.H. 15.

The railroad spike is accepted as the corner location because it was found to be 0.31 feet east of T.H. 15 P.O.T. 1122+69.44, which nearly fits the right of way map location.

For additional information, contact the Mn/DOT Surveys Section at Willmar, Mn 56201.

CERTIFICATE OF LOCATION OF GOVERNMENT CORNER

North Quarter Corner of Section 24, Township 116 N, Range 30 W, 5th P.M.

STATE OF MINNESOTA, County of McLeod

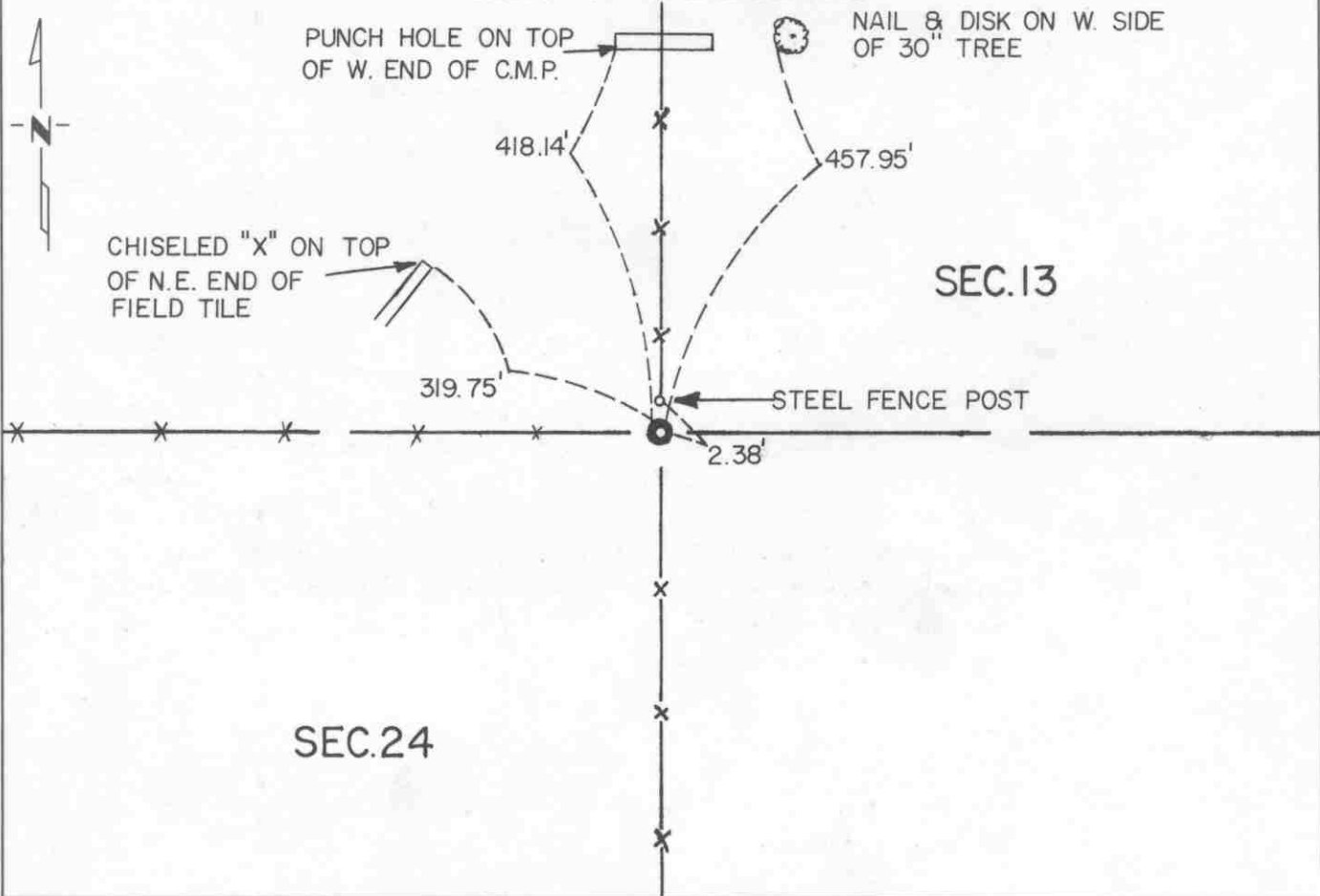
At the corner location shown on the sketch:

On May 1990 found a cast iron monument at the ground surface
DATE

left monument as found, lowered monument, removed monument (explain)

On _____ placed a _____
DATE

SKETCH OF REFERENCE TIES



Statement of evidence relative to this corner location is on back of page.

I hereby certify that this document and the data contained herein was prepared by me or under my direct supervision.

Robert Gaus 8-20-91
SIGNATURE DATE

Registration No. 11864

- Land Surveyor, Professional Engineer
- County Surveyor, County Engineer

OFFICE OF THE COUNTY RECORDER

County of McLeod

I hereby certify that this document was filed in the Co. Recorders office at 2 P .M. on the 18th day of Sep A.D. 1991

County Recorder Armen Ostlie

By _____, Deputy

DOCUMENT NO. 241062

Statement of Evidence:

North Quarter Corner Section 24, T 116 N, R 30 W

- 1855 - The original Public Land Survey was completed by Thomas Simpson. A wood post was set over a charred stake in a dirt mound to mark the corner. Trenches and pits were dug to build the mound. Osage orange was planted at the northeast and southwest corners of the mound.
- 1974 - Dickman Knutson, McLeod County Surveyor, interviewed Mr. Dennis Olson, age 38, who had lived in the the NW 1/4 of Section 24 all his life. He said that a fence corner has always been regarded as the quarter corner location. A McLeod County cast iron monument was set at the corner of fences north, south, and west. The fence corner was measured as being within 1 foot of the split between section corners.
- 1989 - Willard Pellinen, McLeod County Surveyor, traversed around Section 24 and recovered the cast iron monument in the process.
- 1990 - A Mn/DOT survey crew recovered the cast iron monument as shown in Knutson's survey notes.

The cast iron monument is accepted as the corner location because it fits long standing occupation lines and it is 1.46 feet east and 1.57 feet south of the lost location.

For additional information, contact the Mn/DOT Survey Section at Willmar, Mn 56201.